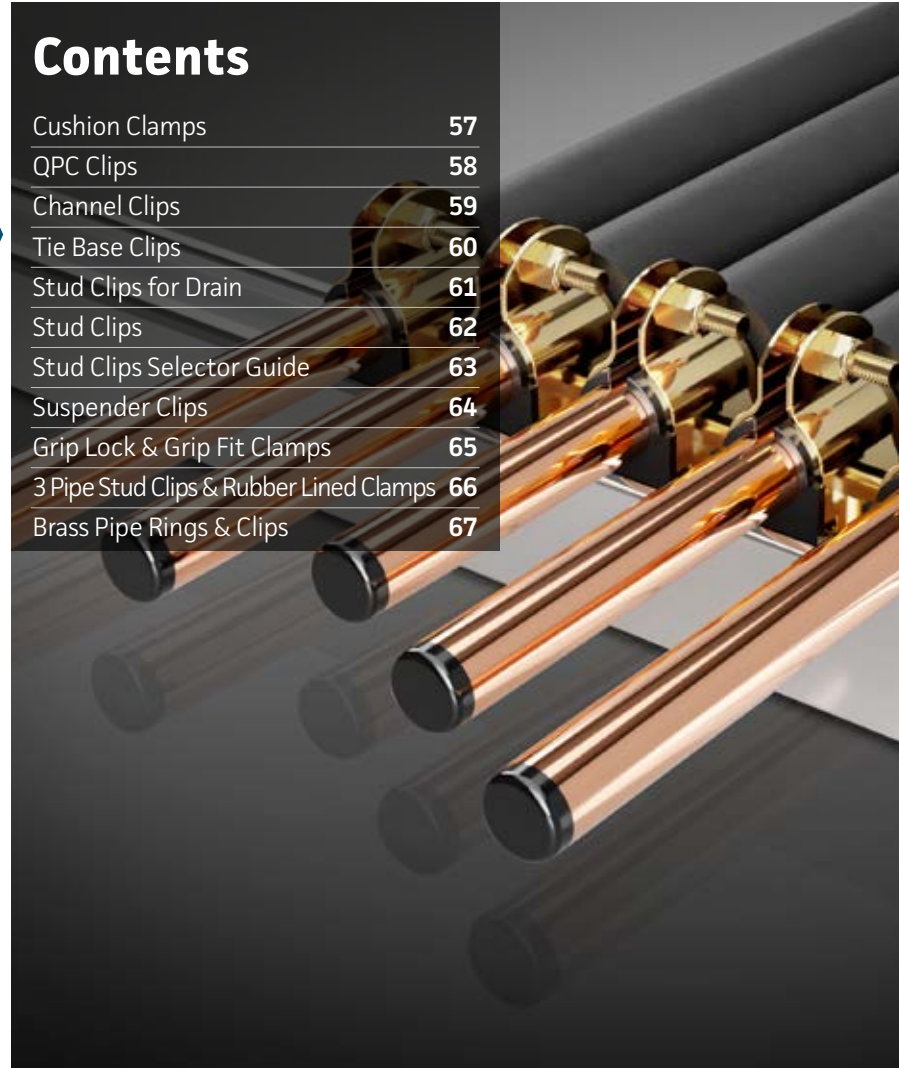


# Pipe Clips & Clamps

## Contents

Cushion Clamps	57
QPC Clips	58
Channel Clips	59
Tie Base Clips	60
Stud Clips for Drain	61
Stud Clips	62
Stud Clips Selector Guide	63
Suspender Clips	64
Grip Lock & Grip Fit Clamps	65
3 Pipe Stud Clips & Rubber Lined Clamps	66
Brass Pipe Rings & Clips	67



## Cushion Clamps

STÖRNCH



STÖRNCH



STÖRNCH



- Channel clip ideal for bigger commercial air conditioning and refrigeration installations
- Insulates against heat loss and reduces vibration
- Quick to install with lock nuts
- Supports individual pipes in a thermo-rubber cushion between two metal plates
- Thermo-rubber cushion insert withstands maximum temperature of 130°C (zinc bracket 1000°C)

## Aluminium Channel



- Recommended for mounting all sizes of Cushion Clamps

Part No	Description	Size	Qty/Pk
<b>GMIC1</b>	Cushion Clamps	¼"	pk 10
<b>GMIC2</b>	Cushion Clamps	⅜"	pk 10
<b>GMIC3</b>	Cushion Clamps	½"	pk 10
<b>GMIC4</b>	Cushion Clamps	⅝"	pk 10
<b>GMIC5</b>	Cushion Clamps	¾"	pk 10
<b>GMIC6</b>	Cushion Clamps	⅞"	pk 10
<b>GMIC7</b>	Cushion Clamps	1-¼"	pk 10
<b>GMIC8</b>	Cushion Clamps	1-⅝"	pk 10
<b>GMIC9</b>	Cushion Clamps	1-¾"	pk 10

Part No	Description	Size
<b>GMIC15</b>	Aluminium Channel	41mm x 21mm x 3mt

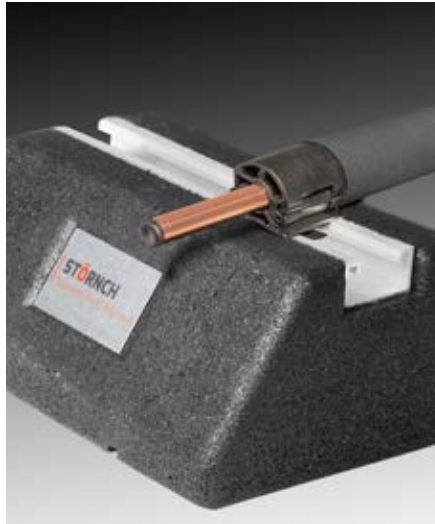


## QPC Clips



- Easy installation - twists into 41mm channel
- External diameter matches diameter of pipes with 9mm insulation
- Clip is constructed to insulate pipe and withstand temperatures between -30°C & 135°C
- Excellent resistance to oil
- Helps dampen noise and vibrations

Part No	Description	Size	Qty/Pk
GMQP1	QPC Clips	¼"	pk 10
GMQP2	QPC Clips	⅜"	pk 10
GMQP3	QPC Clips	½"	pk 10
GMQP4	QPC Clips	⅝"	pk 10
GMQP5	QPC Clips	¾"	pk 10
GMQP6	QPC Clips	⅞"	pk 10
GMQP7	QPC Clips	1-¼"	pk 10
GMQP8	QPC Clips	1-⅜"	pk 10
GMQP9	QPC Clips	1-½"	pk 10



## Channel Clips


**GMIC26**  
 Channel Clip  
 32mm

**GMIC27**  
 Channel Clip  
 35mm

**GMIC28**  
 Channel Clip  
 40mm

**GMIC29**  
 Channel Clip  
 42mm

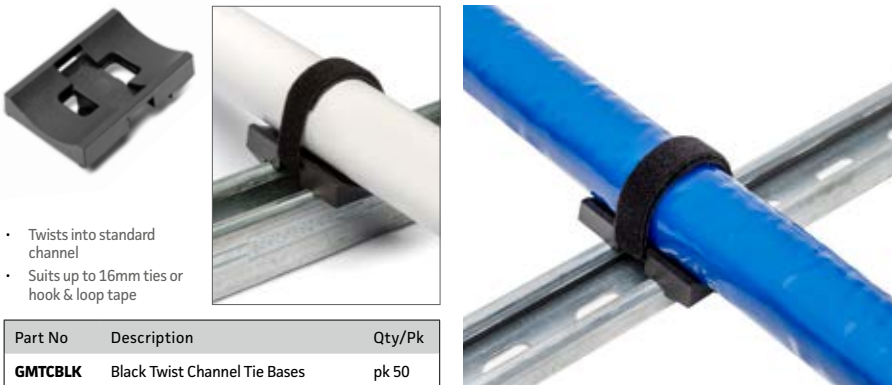
- Suitable for ½" copper with 9mm wall lagging or ¾" copper with 13mm wall lagging
- Suitable for ⅝" & ¾" copper with 9mm wall lagging or ⅞" & 1" copper with 13mm wall lagging
- Also suitable for 1-¼" plastic waste pipe
- Suitable for ¾" copper with 9mm wall lagging or 1" copper with 13mm wall lagging
- Suitable for 1-¼" copper with 9mm wall lagging or 1-½" copper with 13mm wall lagging

Part No	Description	Size	Qty/Pk
GMIC26	Channel Clips	32mm	pk 10
GMIC27	Channel Clips	35mm	pk 10
GMIC28	Channel Clips	40mm	pk 10
GMIC29	Channel Clips	42mm	pk 10

- Designed for rapid single handed installation
- Fits 41mm channel
- Quick to fit over insulated pipes
- Twists into channel



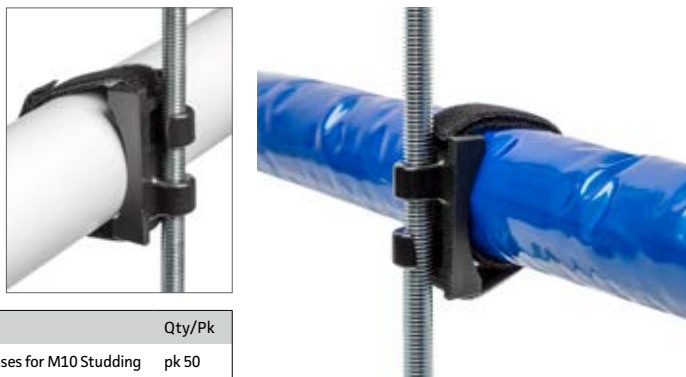
**Black Twist Channel Tie Bases**



- Twists into standard channel
- Suits up to 16mm ties or hook & loop tape

Part No	Description	Qty/Pk
<b>GMTCLBK</b>	Black Twist Channel Tie Bases	pk 50

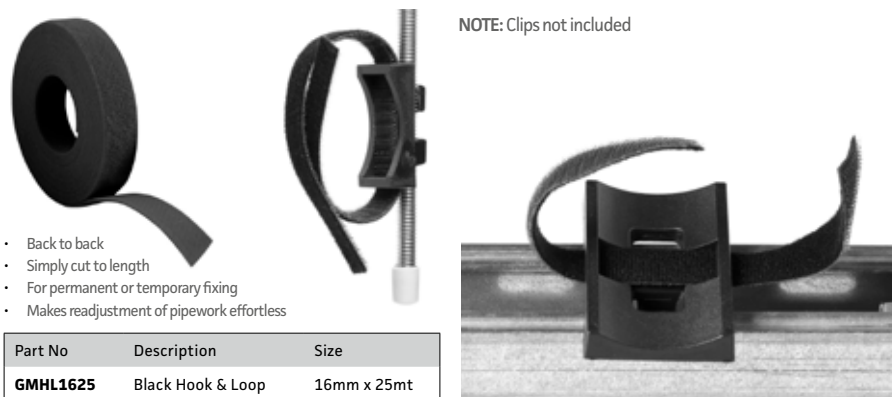
**Black Twist Tie Bases for M10 Studding**



- Twists onto M10 studding
- Suits up to 16mm ties or hook & loop tape

Part No	Description	Qty/Pk
<b>GMTSB</b>	Black Twist Tie Bases for M10 Studding	pk 50

**Black Hook & Loop Tape (Velcro)**



- Back to back
- Simply cut to length
- For permanent or temporary fixing
- Makes readjustment of pipework effortless

Part No	Description	Size
<b>GMHL1625</b>	Black Hook & Loop	16mm x 25mt

**Stud Clips for 3/4" Overflow Pipe**



M8 & M10

- Fast fixing direct to studding
- Simple to install, adjust and relocate
- Fits metric and imperial pipe sizes

Part No	Description	Colour	Size	Qty/Pk
<b>GMRP4</b>	M8 Stud Clips	Black	22mm (3/4")	pk 10
<b>GMRP16</b>	M10 Stud Clips	Black	22mm (3/4")	pk 10

**Open Stud Clips for 3/4" Overflow Pipe**



M8 Only

- Twin application pipe clips enable your pipe to be either fixed to threaded rod or surface mounted
- Simply snap onto threaded rod & adjust up or down
- Features a screw hole in the back to allow surface mounting

Part No	Description	Colour	Size	Qty/Pk
<b>GMRP34</b>	Open Stud Clips	Black	22mm (3/4")	pk 10
<b>GMRP4W</b>	Open Stud Clips	White	22mm (3/4")	pk 10

**Stud Clips for 1-3/4" & 1-1/2" Waste Pipe**



M8 & M10

- Fast fixing direct to studding
- Simple to install, adjust and relocate
- Fits metric and imperial pipe sizes

Part No	Description	Colour	Size	Qty/Pk
<b>GMRP8</b>	M8 Stud Clip	Black	35mm (1-3/4")	pk 10
<b>GMRP20</b>	M10 Stud Clip	Black	35mm (1-3/4")	pk 10
<b>GMRP10</b>	M8 Stud Clip	Black	42mm (1-1/2")	pk 10
<b>GMRP22</b>	M10 Stud Clip	Black	42mm (1-1/2")	pk 10

**Open Stud Clips for 1-3/4" Waste Pipe**



M8 Only

- Twin application pipe clips enable your pipe to be either fixed to threaded rod or surface mounted
- Simply snap onto threaded rod & adjust up or down
- Features a screw hole in the back to allow surface mounting

Part No	Description	Colour	Size	Qty/Pk
<b>GMRP38</b>	Open Stud Clips	Black	35mm (1-3/4")	pk 10
<b>GMRP8W</b>	Open Stud Clips	White	35mm (1-3/4")	pk 10

## Stud Clips

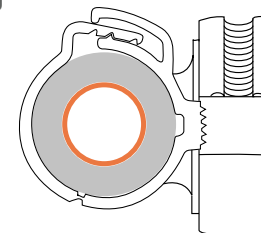


- Fast fixing direct to studding
- Simple to install, adjust and relocate
- Fits metric and imperial pipe sizes

Part No	Description	Colour	Metric	Imperial	Stud Size	Qty/Pk	Suited For
<b>GMRP2</b>	Stud Pipe Clips	Black	15mm	5/8"	M8	pk 10	
<b>GMRP4</b>	Stud Pipe Clips	Black	22mm	7/8"	M8	pk 10	3/4" Overflow Pipe
<b>GMRP5</b>	Stud Pipe Clips	Black	25mm	1"	M8	pk 10	
<b>GMRP6</b>	Stud Pipe Clips	Black	28mm	1-1/8"	M8	pk 10	
<b>GMRP7</b>	Stud Pipe Clips	Black	32mm	1-1/4"	M8	pk 10	
<b>GMRP8</b>	Stud Pipe Clips	Black	35mm	1-3/8"	M8	pk 10	1-1/4" Waste Pipe
<b>GMRP9</b>	Stud Pipe Clips	Black	40mm	1-1/2"	M8	pk 10	
<b>GMRP10</b>	Stud Pipe Clips	Black	42mm	1-5/8"	M8	pk 10	1-1/2" Waste Pipe
<b>GMRP11</b>	Stud Pipe Clips	Black	50mm	2"	M8	pk 10	
<b>GMRP12</b>	Stud Pipe Clips	Black	54mm	2-1/8"	M8	pk 10	2" Waste Pipe
<b>GMRP14</b>	Stud Pipe Clips	Black	15mm	5/8"	M10	pk 10	
<b>GMRP16</b>	Stud Pipe Clips	Black	22mm	7/8"	M10	pk 10	3/4" Overflow Pipe
<b>GMRP18</b>	Stud Pipe Clips	Black	28mm	1-1/8"	M10	pk 10	
<b>GMRP19</b>	Stud Pipe Clips	Black	32mm	1-1/4"	M10	pk 10	
<b>GMRP20</b>	Stud Pipe Clips	Black	35mm	1-3/8"	M10	pk 10	1-1/4" Waste Pipe
<b>GMRP21</b>	Stud Pipe Clips	Black	40mm	1-1/2"	M10	pk 10	
<b>GMRP22</b>	Stud Pipe Clips	Black	42mm	1-5/8"	M10	pk 10	1-1/2" Waste Pipe
<b>GMRP24</b>	Stud Pipe Clips	Black	54mm	2-1/8"	M10	pk 10	2" Waste Pipe

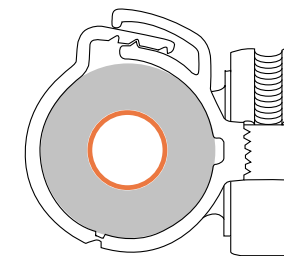
## Clip Selection Guide

Copper with 9mm wall lagging



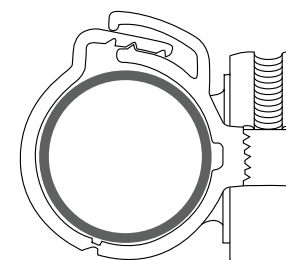
Clip Size	Copper + 9mm Wall Lagging	M8 Stud Clip Part No's	M10 Stud Clip Part No's
<b>25mm</b>	3/4"	<b>GMRP5</b>	
<b>28mm</b>	3/4"	<b>GMRP6</b>	<b>GMRP18</b>
<b>32mm</b>	1/2"	<b>GMRP7</b>	<b>GMRP19</b>
<b>35mm</b>	5/8" & 3/4"	<b>GMRP8</b>	<b>GMRP20</b>
<b>40mm</b>	3/4"	<b>GMRP9</b>	<b>GMRP21</b>
<b>42mm</b>	1 1/8"	<b>GMRP10</b>	<b>GMRP22</b>
<b>54mm</b>	1 3/8"	<b>GMRP12</b>	<b>GMRP24</b>

Copper with 13mm wall lagging



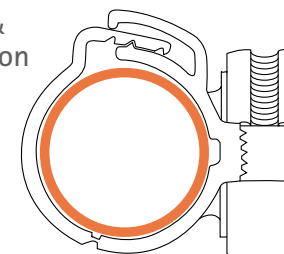
Clip Size	Copper + 13mm Wall Lagging	M8 Stud Clip Part No's	M10 Stud Clip Part No's
<b>32mm</b>	3/4"	<b>GMRP7</b>	<b>GMRP19</b>
<b>35mm</b>	5/8" & 3/4"	<b>GMRP8</b>	<b>GMRP20</b>
<b>40mm</b>	3/4"	<b>GMRP9</b>	<b>GMRP21</b>
<b>42mm</b>	3/4"	<b>GMRP10</b>	<b>GMRP22</b>
<b>50mm</b>	7/8"	<b>GMRP11</b>	
<b>54mm</b>	1 1/8"	<b>GMRP12</b>	<b>GMRP24</b>

Plastic Drain



Clip Size	Plastic Drain	M8 Stud Clip Part No's	M10 Stud Clip Part No's
<b>22mm</b>	3/4" Overflow	<b>GMRP4, GMRP4W &amp; GMRP34</b>	<b>GMRP16</b>
<b>35mm</b>	1 1/4" Waste	<b>GMRP8, GMRP8W &amp; GMRP38</b>	<b>GMRP20</b>
<b>42mm</b>	1 1/2" Waste	<b>GMRP10</b>	<b>GMRP22</b>
<b>54mm</b>	2" Waste	<b>GMRP12</b>	<b>GMRP24</b>

Plumbing & Refrigeration Copper without lagging



Clip Size	Plumbing Copper	Refrigeration Copper	M8 Stud Clip Part No's	M10 Stud Clip Part No's
<b>15mm</b>	15mm		<b>GMRP2</b>	
<b>22mm</b>	22mm	7/8"	<b>GMRP4, GMRP4W &amp; GMRP34</b>	<b>GMRP16</b>
<b>25mm</b>		1"	<b>GMRP5</b>	
<b>28mm</b>	28mm	1 1/8"	<b>GMRP6</b>	<b>GMRP18</b>
<b>32mm</b>		1 1/4"	<b>GMRP7</b>	<b>GMRP19</b>
<b>35mm</b>	35mm	1 3/8"	<b>GMRP8, GMRP8W &amp; GMRP38</b>	<b>GMRP20</b>
<b>40mm</b>		1 1/2"	<b>GMRP9</b>	<b>GMRP21</b>
<b>42mm</b>	42mm	1 5/8"	<b>GMRP10</b>	<b>GMRP22</b>
<b>50mm</b>		2"	<b>GMRP11</b>	
<b>54mm</b>	54mm	2 1/8"	<b>GMRP12</b>	<b>GMRP24</b>

**Metal Suspender Clips**

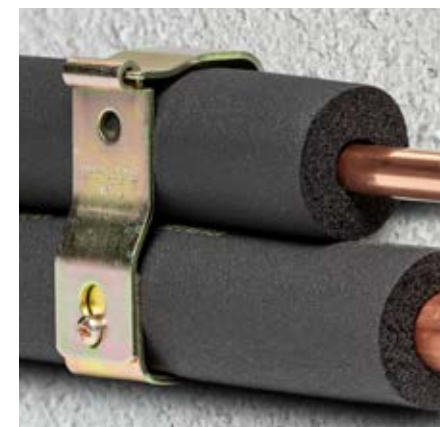


- The quick and effective way of suspending pipework from M8 and M10 studding
- By simply squeezing the tips together the spring steel rod hanger can be fitted or adjusted in seconds



Part No	Description	Size	Qty/Pk
<b>GMSC1</b>	Size 1 Suspender Clips	For ¼" & ½"	pk 10
<b>GMSC2</b>	Size 2 Suspender Clips	For ¾" & 1"	pk 10
<b>GMSC3</b>	Size 3 Suspender Clips	For 1½" & 2"	pk 10
<b>GMSC4</b>	Size 4 Suspender Clips	For 2½" & 3½"	pk 10

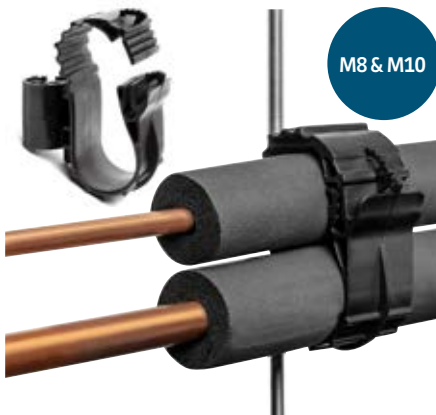
**Grip Locks**



Part No	Description	Size	Range	Qty/Pk
<b>GMG1</b>	No 1 Grip Locks	54mm	For ¼" & ½"	pk 10
<b>GMG2</b>	No 2 Grip Locks	60mm	For ¾" & 1"	pk 10
<b>GMG3</b>	No 3 Grip Locks	67mm	For 1½" & 2"	pk 10
<b>GMG4</b>	No 4 Grip Locks	80mm	For 2½" & 3½"	pk 10

- For internal & external use
- Coated with yellow passivate
- Hinged for easy pipe installation
- Wide metal components for good pipe support
- Space for electrical cables and condensate tube
- Fits directly to walls or ceilings

**Plastic Suspender Clips**



M8 & M10



M8 Only

- Ideal for supporting pipework hanging from ceilings
- Fits securely to both M8 and M10 studding
- Adjustable clipping mechanism

- Offers horizontal support for pipe sets on air conditioning systems
- For M8 studding
- Simple to install, adjust and relocate
- Secure extendible ratchet closure
- Clip encloses both line set and cables
- Max recommended distance per clip 1.2m

Part No	Description	Size	Qty/Pk
<b>GMSCP2</b>	Plastic Suspender Clips	For ¾" & 1"	pk 5
<b>GMSCP3</b>	Plastic Suspender Clips	For 1½" & 2"	pk 5
<b>GMSCP4</b>	Plastic Suspender Clips	For 2½" & 3½"	pk 5

Part No	Description	Size	Qty/Pk
<b>GMRP50</b>	Plastic Suspender Clips	½" - 7/8" to ¾" - 1-½"	pk 5

**Black Grip Fit Clamps**



Part No	Description	Size	Qty/Pk
<b>GMGFC1</b>	No 1 Grip Fit Clamps	For ¼" & ½"	pk 10
<b>GMGFC2</b>	No 2 Grip Fit Clamps	For ¾" & 1"	pk 10
<b>GMGFC3</b>	No 3 Grip Fit Clamps	For 1½" & 2"	pk 10
<b>GMGFC4</b>	No 4 Grip Fit Clamps	For 2½" & 3½"	pk 10

- The asymmetric design provides a perfect fit for any one of four pairs of flow and return insulated refrigerant pipes
- 8mm clearance hole allows the clamp to be fixed directly to any flat surface, such as a wall or ceiling.
- Corrosion-resistant black zinc coating to match pipe insulation
- Mounts to any flat surface, in any orientation
- Hinged design allows for a quick install

## 3 Pipe Stud Clips



Part No	Description	Size	Qty/Pk
<b>GMJ70</b>	3 Pipe Clip	¾", ¾" & ¾" to ¾", ¾" & 1"	pk 5
<b>GMJ71</b>	3 Pipe Clip	½", 1 ¼", ¾" to ¾", 1", 1 ¼"	pk 5
<b>GMJ72</b>	3 Pipe Clip	¾", 1 ¼", 1 ¼" to ¾", 1 ¾", 1 ¾"	pk 5
<b>GMJ73</b>	3 Pipe Clip	¾", 1 ¼", 1 ¼" to ¾", 1 ¾", 1 ¾"	pk 5

- Ideal for the suspension of VRV/VRF pipe runs
- Locates onto M8 and M10 studding
- No need for cable tray
- Hinge security cover plate fastens with one screw
- Can be used for surface mount
- Note: Approximate pipe sizes (allowing for 13mm insulation)

## Rubber Lined Pipe Clamps



- All clips are dual tapped to take M8 and M10 studding
- Rubber lining ideal for both insulation and noise control
- \*GMJ4 suits 1-¼" drain

Part No	Description	Size	Qty/Pk
<b>GMJ1-50</b>	Rubber Lined Pipe Clamp	15mm	pk 50
<b>GMJ2-50</b>	Rubber Lined Pipe Clamp	22mm	pk 50
<b>GMJ3-50</b>	Rubber Lined Pipe Clamp	28mm	pk 50
<b>GMJ4-50*</b>	Rubber Lined Pipe Clamp	35mm	pk 50

Part No	Description	Size	Qty/Pk
<b>GMJ5-50</b>	Rubber Lined Pipe Clamp	42mm	pk 50
<b>GMJ13B-50</b>	Rubber Lined Pipe Clamp	48 - 53mm	pk 50
<b>GMJ6-50</b>	Rubber Lined Pipe Clamp	54mm	pk 50
<b>GMJ14B</b>	Rubber Lined Pipe Clamp	58 - 64mm	Each
<b>GMJ11B</b>	Rubber Lined Pipe Clamp	108mm	Each

## Brass Pipe Rings



Part No	Description	Size	Qty/Pk
<b>GMJ14A</b>	M10 Single Brass Pipe Ring	15mm	Each
<b>GMJ15</b>	M10 Single Brass Pipe Ring	22mm	Each
<b>GMJ16</b>	M10 Single Brass Pipe Ring	28mm	Each
<b>GMJ17</b>	M10 Single Brass Pipe Ring	35mm	Each
<b>GMJ18</b>	M10 Single Brass Pipe Ring	42mm	Each

- Used for pipe installation/management
- Can be used in conjunction with M10 male backplates
- Available to suit common pipe sizes, from 15mm up to 42mm

## Brass Backplates



- Can be used in conjunction with M10 studding
- Can be used in conjunction with brass pipe rings to secure copper pipework to walls and ceilings
- Available in M10

Part No	Description	Size	Qty/Pk
<b>GMJ13A</b>	Male Brass Backplate	M10	Each
<b>GMJ11A</b>	Female Brass Backplate	M10	Each

## Pressed Pipe Clips



- Used for pipe installation/management
- Available to suit common pipe sizes, from 15mm up to 28mm

Part No	Description	Size	Qty/Pk
<b>GMPC30</b>	Pressed Pipe Clip	15mm	Each
<b>GMPC31</b>	Pressed Pipe Clip	22mm	Each
<b>GMPC32</b>	Pressed Pipe Clip	28mm	Each

## Munson Bases

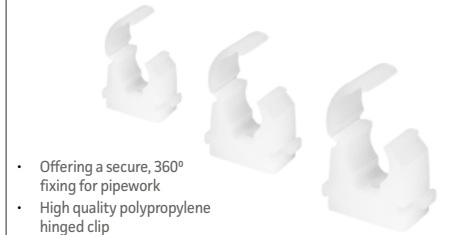
STÖRNCH



- Used to attach studding to a flat surface
- Dual tapped to accept M8 or M10 threads
- Zinc plated (BZP)

Part No	Description	Qty/Pk
<b>GMJ12A-25</b>	Dual Tapped Munson Bases BZP	pk 25

## Talon Pipe Clips



- Offering a secure, 360° fixing for pipework
- High quality polypropylene hinged clip

Part No	Description	Size	Qty/Pk
<b>GMTAL15S</b>	Talon Pipe Clips	15mm	pk 100
<b>GMTAL22S</b>	Talon Pipe Clips	22mm	pk 100
<b>GMTAL28S</b>	Talon Pipe Clips	28mm	pk 50