

Condensate Removal

Contents

Overflow Drain Pipe & Fittings	129–130
Waste Drain Pipe & Fittings	131–132
Plastic & Rubber Reducers	133
Big Boss & Strap Boss Adapters	134
Stud Clips for Drain Pipe	135
Braided Condensate Hose & Fittings	136-137
Plumbing Copper Tube & End Feed Fittings	138-139
Plumbing Copper Solder Ring Fittings	140
Plumbing Copper Press Jaws & Fittings	141-142
Plumbing Copper Compression Fittings	143-144
Plumbing Copper Pipe Clips	145-146
Tank Pumps	147-149
Peristaltic Pumps	150
Elbow Pumps	151-153
Micro, Mini & Maxi Pumps	154-156
Rotary Diaphragm Pumps	157-158
Refrigeration Cabinet/Dairy Pumps	159
Condensate Drain Accessories	160



Overflow Pipe



- Solvent weld
- Manufactured from PVC-U
- Thick wall pipe

Part No	Description	Size	Length
GMDP1W	White Overflow Pipe	¾" (21.5mm)	2.9mt
GMDP1B	Black Overflow Pipe	¾" (21.5mm)	2.9mt

Overflow - 90° Elbows



- Solvent weld
- Manufactured from PVC-U

Part No	Description	Size	Length
GMDP3W-5	White 90° Elbows	¾" (21.5mm)	pk 5
GMDP3B-5	Black 90° Elbows	¾" (21.5mm)	pk 5

Overflow - Equal Tees



- Solvent weld
- Manufactured from PVC-U

Part No	Description	Size	Length
GMDP5W-5	White Equal Tees	¾" (21.5mm)	pk 5
GMDP5B-5	Black Equal Tees	¾" (21.5mm)	pk 5

Overflow - Straight Couplings



- Solvent weld
- Manufactured from PVC-U

Part No	Description	Size	Length
GMDP2W-5	White Straight Couplings	¾" (21.5mm)	pk 5
GMDP2B-5	Black Straight Couplings	¾" (21.5mm)	pk 5

Overflow - 45° Bends



- Solvent weld
- Manufactured from PVC-U

Part No	Description	Size	Length
GMDP4W-5	White 45° Bends	¾" (21.5mm)	pk 5
GMDP4B-5	Black 45° Bends	¾" (21.5mm)	pk 5

Overflow - Pipe Clips



- Manufactured from PVC-U
- Wall fixing

Part No	Description	Size	Length
GMDP7W-5	White Pipe Clips	¾" (21.5mm)	pk 5
GMDP7B-5	Black Pipe Clips	¾" (21.5mm)	pk 5

Overflow - Tank Connectors



- Solvent weld
- For connecting overflow pipe to tanks/drip trays

Part No	Description	Size	Qty/Pk
GMDP6W-5	White Tank Connectors	¾" (21.5mm)	pk 5
GMDP6B-5	Black Tank Connectors	¾" (21.5mm)	pk 5

Overflow - Push Fit End Cap



- Releasable push fit stop end cap
- Also designed for use on 22mm copper pipe

Part No	Description	Size	Qty/Pk
GMDP37	White Push Fit End Cap	¾" (21.5mm)	Each

Overflow - Waste Valve



- Waterless Trap (compression)
- For vertical installation only

Part No	Description	Size
GMDP44	Waste Valve	¾" (21.5mm)

Solvent Cement



- For use with solvent weld products
- Supplied with brush applicator
- Up to 55 joints per tub

STÖRNCH

Part No	Description	Size
GMDP35	Solvent Cement	250ml



Waste Drain Pipes



- Solvent weld
- Manufactured from ABS

Part No	Description	Size	Length
GMDP10W	White ABS Waste Pipe	1¼" (32mm)	3mt
GMDP20	White ABS Waste Pipe	1½" (40mm)	3mt
GMDP10B	Black ABS Waste Pipe	1¼" (32mm)	3mt
GMDP20B	Black ABS Waste Pipe	1½" (40mm)	3mt

Straight Couplings



- Solvent weld
- Manufactured from ABS

Part No	Description	Size	Qty/Pk
GMDP11W-5	White Straight Couplings	1¼" (32mm)	pk 5
GMDP21-5	White Straight Couplings	1½" (40mm)	pk 5
GMDP11B-5	Black Straight Couplings	1¼" (32mm)	pk 5
GMDP21B-5	Black Straight Couplings	1½" (40mm)	pk 5

Waste Drain - 90° Elbows



- Solvent weld
- Manufactured from ABS

Part No	Description	Size	Length
GMDP12W-5	White 90° Elbows	1¼" (32mm)	pk 5
GMDP22-5	White 90° Elbows	1½" (40mm)	pk 5
GMDP12B-5	Black 90° Elbows	1¼" (32mm)	pk 5
GMDP22B-5	Black 90° Elbows	1½" (40mm)	pk 5

Waste Drain - 90° Conversion Bend



- Black
- Pipe to fitting joint
- Solvent weld
- Manufactured from PVC

Part No	Description	Size	Qty Pk
GMDP512B-10	90° Conversion Bend	1¼" (32mm)	pk 10

Waste Drain - 45° Bends



- Solvent weld
- Manufactured from ABS

Part No	Description	Size	Length
GMDP13W-5	White 45° Bends	1¼" (32mm)	pk 5
GMDP23-5	White 45° Bends	1½" (40mm)	pk 5
GMDP13B-5	Black 45° Bends	1¼" (32mm)	pk 5
GMDP23B-5	Black 45° Bends	1½" (40mm)	pk 5

Waste Drain - 45° Conversion Bend



- Black
- Pipe to fitting joint
- Solvent weld
- Manufactured from PVC

Part No	Description	Size	Qty Pk
GMDP513B-10	45° Conversion Bends	1¼" (32mm)	pk 10

Waste Drain - Equal Tees



- Solvent weld
- Manufactured from ABS

Part No	Description	Size	Qty/Pk
GMDP14W-5	White Equal Tees	1½" (32mm)	pk 5
GMDP24-5	White Equal Tees	1½" (40mm)	pk 5
GMDP14B-5	Black Equal Tees	1½" (32mm)	pk 5
GMDP24B-5	Black Equal Tees	1½" (40mm)	pk 5

Waste Drain - Screwed Access Plugs



- Solvent weld
- Manufactured from ABS
- Connects to fittings

Part No	Description	Size	Qty/Pk
GMDP18W-5	White Access Plugs	1½" (32mm)	pk 5
GMDP30-5	White Access Plugs	1½" (40mm)	pk 5
GMDP18B-5	Black Access Plugs	1½" (32mm)	pk 5
GMDP30B-5	Black Access Plugs	1½" (40mm)	pk 5

Waste Drain - Pipe Clips



- Manufactured from ABS

Part No	Description	Size	Qty/Pk
GMDP19W-5	White Pipe Clips	1½" (32mm)	pk 5
GMDP31-5	White Pipe Clips	1½" (40mm)	pk 5
GMDP19B-5	Black Pipe Clips	1½" (32mm)	pk 5
GMDP31B-5	Black Pipe Clips	1½" (40mm)	pk 5

Hepv0 Waste Valves

Adapters Sold Separately



- Hygienic self-sealing valve designed to prohibit the escape of foul sewage smells into the air.
- Ideal for installation in confined spaces
- Won't dry out
- Prevents foul sewer air from entering a building

Part No	Description	Size
GMDP40	Hepv0 Waste Valve	1½"
GMDP41	Hepv0 Waste Valve	1½"

Waste Valve Compression Adapters



Part No	Description	Size
GMDP42	Hepworth BV3 Compression Adapter for Hepv0	1½"
GMDP45	McAlpine S31M Compression Adapter for Hepv0	1½"
GMDP46	McAlpine T31M Compression Adapter for Hepv0	1½"

- Adapters for Hepv0 Waste Valves

Plastic Reducers - White



Part No	Description	Size	Qty/Pk
GMDP9W-5	Plastic Reducers - White	1¼" - ¾"	pk 5
GMDP28-5	Plastic Reducers - White	1½" - 1¼"	pk 5
GMDP29-5	Plastic Reducers - White	1½" - ¾"	pk 5
GMDP58-5	Plastic Reducers - White	2" - 1¼"	pk 5

- Solvent weld
- For reducing fittings (pipe inserts into one end and a fitting in the other)

Plastic Reducers - Black



Part No	Description	Size	Qty/Pk
GMDP9B-5	Plastic Reducers - Black	1¼" - ¾"	pk 5
GMDP29B-5	Plastic Reducers - Black	1½" - ¾"	pk 5
GMDP28B-5	Plastic Reducers - Black	1½" - 1¼"	pk 5

- Solvent weld
- For reducing fittings (pipe inserts into one end and a fitting in the other)

Rubber Reducer - Black



- For reducing fittings (pipe inserts into one end and a fitting in the other)

Part No	Description	Size	Qty/Pk
GMDP8-5	Rubber Reducers - Black	1¼" - ¾"	pk 5



Big Boss Adapters



- Manufactured from ABS
- Big Boss Pipe Adapters make connecting a solvent weld pipe to a 110mm soil pipe a fast and easy procedure
- Clean and prepare the hole, removing any burrs to help with inserting the fitting

Part No	Description	Colour	Size	Use Hole Saw
GMDP60B	Big Boss Adapters	Black	¾" (21.5mm)	T25M (25mm)
GMDP61B	Big Boss Adapters	Black	1 ¼" (32mm)	T38M (38mm)
GMDP60G	Big Boss Adapters	Grey	¾" (21.5mm)	T25M (25mm)
GMDP61G	Big Boss Adapters	Grey	1 ¼" (32mm)	T38M (38mm)
GMDP62G	Big Boss Adapters	Grey	1 ½" (40mm)	T44M (44mm)
GMDP60W	Big Boss Adapters	White	¾" (21.5mm)	T25M (25mm)
GMDP61W	Big Boss Adapters	White	1 ¼" (32mm)	T38M (38mm)
GMDP62W	Big Boss Adapters	White	1 ½" (40mm)	T44M (44mm)

Strap Boss & Adapters



Adapters Sold Separately

- Easy clip connection to soil pipe
- Strap bosses are supplied without the rubber adapter – Choose required adapter from the options below

Part No	Description	Size	Colour	Use Hole Saw
GMDP15W	Strap Boss	4"	White	T54M (54mm)
GMDP15B	Strap Boss	4"	Black	T54M (54mm)
GMDP16	Strap Boss	6"	Grey	T54M (54mm)

Part No	Description	Size	Colour
GMDP38	Rubber Adapter	1 ¼"	Black
GMDP39	Rubber Adapter	1 ½"	Black

Stud Clips for ¾" Overflow Pipe



M8 & M10

- Fast fixing direct to studding
- Simple to install, adjust and relocate
- Fits metric and imperial pipe sizes

Part No	Description	Colour	Size	Qty/Pk
GMRP4	M8 Stud Clip	Black	22mm (¾")	pk 10
GMRP16	M10 Stud Clip	Black	22mm (¾")	pk 10

Open Stud Clips for ¾" Overflow Pipe



M8 Only

- Twin application pipe clips enable your pipe to be either fixed to threaded rod or surface mounted
- Simply snap onto threaded rod & adjust up or down
- Also have a screw hole in the back to allow surface mounting

Part No	Description	Colour	Size	Qty/Pk
GMRP34	Open Stud Clip	Black	22mm (¾")	pk 10
GMRP4W	Open Stud Clip	White	22mm (¾")	pk 10

Stud Clips for 1-¼" & 1-½" Waste Pipe



M8 & M10

- Fast fixing direct to studding
- Simple to install, adjust and relocate
- Fits metric and imperial pipe sizes

Part No	Description	Colour	Size	Qty/Pk
GMRP8	M8 Stud Clip	Black	35mm (1-¼")	pk 10
GMRP20	M10 Stud Clip	Black	35mm (1-¼")	pk 10
GMRP10	M8 Stud Clip	Black	42mm (1-½")	pk 10
GMRP22	M10 Stud Clip	Black	42mm (1-½")	pk 10

Open Stud Clips for 1-¼" Waste Pipe



M8 Only

- Twin application pipe clips enable your pipe to be either fixed to threaded rod or surface mounted
- Simply snap onto threaded rod & adjust up or down
- Also have a screw hole in the back to allow surface mounting

Part No	Description	Colour	Size	Qty/Pk
GMRP38	Open Stud Clip	Black	35mm (1-¼")	pk 10
GMRP8W	Open Stud Clip	White	35mm (1-¼")	pk 10

Clear Braided Hoses



- Tough, flexible and extremely durable under normal operating conditions
- Reinforced with high tensile polyester fibres
- Resistant to a wide range of chemicals

Part No	Description	Size	Roll Length
GMBH14C	Braided Hose - Clear	¼"	30mt
GMBH14C-100	Braided Hose - Clear	¼"	100mt
GMBH38C	Braided Hose - Clear	¾"	30mt
GMBH38C-100	Braided Hose - Clear	¾"	100mt

Part No	Description	Size	Roll Length
GMBH12	Braided Hose - Clear	½"	30mt
GMBH58	Braided Hose - Clear	¾"	30mt
GMBH34	Braided Hose - Clear	¾"	30mt
GMBH1	Braided Hose - Clear	1"	30mt

Black Braided Hoses



- Tough, flexible and extremely durable under normal operating conditions
- Reinforced with high tensile polyester fibres
- Resistant to a wide range of chemicals
- Black hose has no light penetration, limiting the build-up of mould/algae growth

Part No	Description	Size	Roll Length
GMBH14B	Braided Hose - Black	¼"	30mt
GMBH14B-100	Braided Hose - Black	¼"	100mt

Part No	Description	Size	Roll Length
GMBH38B	Braided Hose - Black	¾"	30mt
GMBH38B-100	Braided Hose - Black	¾"	100mt

Braided Hose Straight Connectors



- Used for joining two lengths of braided hose of the same diameter

Part No	Description	Size	Qty/Pk
GMHF3-5	Straight Connectors	¼"	pk 5
GMHF4-5	Straight Connectors	¾"	pk 5

Braided Hose Reducer & Tee



- Reducer for reducing from ¾" to ¼" braided hose

Part No	Description	Size	Qty/Pk
GMHF5-5	Reducers	¾" - ¼"	pk 5
GMHF8-5	Tees	¼"	pk 5

Non Return Valves



- Only allow the flow of water through in one direction, to prevent back-flow

Part No	Description	Size	Qty/Pk
GMHF1	Non Return Valve	¼"	pk 5
GMHF2	Non Return Valve	¾"	pk 5

Self Sealing Fittings



- The self-sealing fitting is used to connect 6 mm – 9.5 mm (1/4" – 3/8") hose to soil and vent pipes.
- Ø Drill size 11.5mm

Part No	Description	Size	Hole Size	Qty/Pk
GMP84-3	Self Sealing Fitting	¼" & ¾"	11.5mm	pk 3

Hose Clamps



- Used for clamping braided hose & other applications
- Worm drive

Part No	Description	Size	Qty/Pk
GMHF20-10	Hose Clamps	8 - 12mm	pk 10
GMHF21-10	Hose Clamps	10 - 16mm	pk 10
GMHF22-10	Hose Clamps	12 - 20mm	pk 10

Part No	Description	Size	Qty/Pk
GMHF23-10	Hose Clamps	16 - 25mm	pk 10
GMHF24-10	Hose Clamps	20 - 32mm	pk 10
GMHF25-10	Hose Clamps	25 - 40mm	pk 10

Braided Hose to Overflow Connector



- Handy option to connect 1/4" or 3/8" braided hose onto 3/4" (22mm) overflow pipe

Part No	Description	Qty/Pk
GMP88	Braided Hose to Overflow Connectors	pk 3

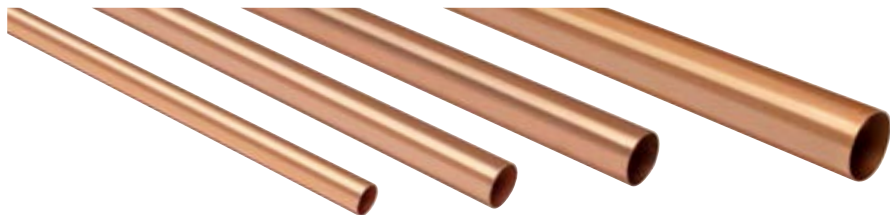
Flexible Drain Pipe



- Condensate removal hose in a continuous length
- Can fit directly onto some wall units

Part No	Description	Size	Roll/Length
GMDPF1	Flexible Drain Pipe	16mm	50mt

Plumbing Copper Tube



- Used for the removal of condensate
- Conforms to BS EN1057 R250/R290

Part No	Description	Size	Length
GMPC1	Plumbing Copper Tube	15mm x 0.7mm	3mt
GMPC2	Plumbing Copper Tube	22mm x 0.9mm	3mt

Part No	Description	Size	Length
GMPC3	Plumbing Copper Tube	28mm x 0.9mm	3mt
GMPC4	Plumbing Copper Tube	35mm x 1.2mm	3mt

End Feed Straight Couplers



- Used for joining plumbing copper tubing in condensate removal applications

Part No	Description	Size
GMPC5	End Feed Straight Coupler	15mm
GMPC6	End Feed Straight Coupler	22mm
GMPC7	End Feed Straight Coupler	28mm
GMPC8	End Feed Straight Coupler	35mm

End Feed 90° Elbows



- Used for joining plumbing copper tubing in condensate removal applications

Part No	Description	Size
GMPC9	End Feed 90° Elbow	15mm
GMPC10	End Feed 90° Elbow	22mm
GMPC11	End Feed 90° Elbow	28mm
GMPC12	End Feed 90° Elbow	35mm

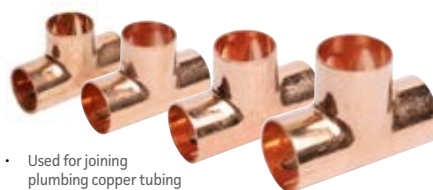
End Feed 45° Elbows



- Used for joining plumbing copper tubing in condensate removal applications

Part No	Description	Size
GMPC35	End Feed 45° Elbow	15mm
GMPC36	End Feed 45° Elbow	22mm
GMPC37	End Feed 45° Elbow	28mm
GMPC38	End Feed 45° Elbow	35mm

End Feed Equal Tees



- Used for joining plumbing copper tubing in condensate removal applications

Part No	Description	Size
GMPC13	End Feed Equal Tee	15mm
GMPC14	End Feed Equal Tee	22mm
GMPC15	End Feed Equal Tee	28mm
GMPC16	End Feed Equal Tee	35mm

End Feed End Caps



- Used for capping plumbing copper tubing in condensate removal applications

Part No	Description	Size
GMPC322	End Feed End Cap	15mm
GMPC323	End Feed End Cap	22mm
GMPC324	End Feed End Cap	28mm
GMPC325	End Feed End Cap	35mm

End Feed Fitting Reducers



- Used for reducing plumbing copper tubing in condensate removal applications

Part No	Description	Size
GMPC17	End Feed Fitting Reducer	22mm - 15mm
GMPC18	End Feed Fitting Reducer	28mm - 22mm
GMPC86	End Feed Fitting Reducer	35mm - 22mm
GMPC19	End Feed Fitting Reducer	35mm - 28mm

Lead-Free Solder



- Used for fusing metals together
- Designed to produce joints quickly and cleanly

Part No	Description	Size	Weight
GMPC70	Lead-Free Solder	3.25mm	500g

La-Co Flux & Brush



- Water-soluble paste - won't leave residue in water piping
- Non-acid, non-toxic & lead-free
- Cleans pipe on application, allowing solder to run more smoothly

Part No	Description	Weight
GMPC71	La-Co Flux	125g
GMPT73	Flux Brush	

Wire Wool



- Made up of fine, flexible steel filaments
- Used for cleaning tube and joints

Part No	Description	Size
GMPC69	Wire Wool	200g

PTFE Tape & Thread Sealing Cord



- WRAS approved
- Conforms to BS7786:1995
- For use with water only
- Threaded pipe sealing cord
- Fast, easy and secure

Part No	Description	Size
GMT7	PTFE Tape	12mm x 0.075mm x 12mt
GMT9	Loctite 55 Sealing Cord	160mt

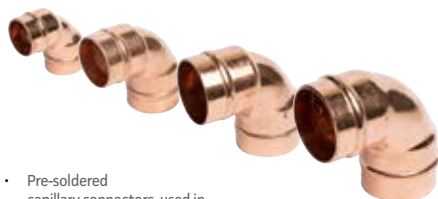
Solder Ring Straight Couplers



- Pre-soldered capillary connectors, used in condensate removal applications

Part No	Description	Size
GMPC102	Solder Ring Straight Coupler	15mm
GMPC103	Solder Ring Straight Coupler	22mm
GMPC104	Solder Ring Straight Coupler	28mm
GMPC105	Solder Ring Straight Coupler	35mm

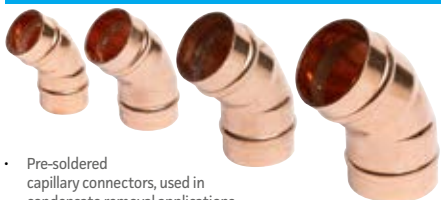
Solder Ring 90° Elbows



- Pre-soldered capillary connectors, used in condensate removal applications

Part No	Description	Size
GMPC112	Solder Ring 90° Elbow	15mm
GMPC113	Solder Ring 90° Elbow	22mm
GMPC114	Solder Ring 90° Elbow	28mm
GMPC115	Solder Ring 90° Elbow	35mm

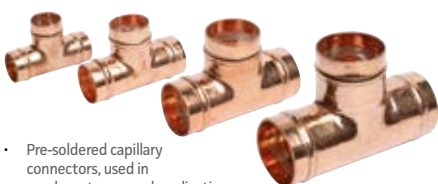
Solder Ring 45° Elbows



- Pre-soldered capillary connectors, used in condensate removal applications

Part No	Description	Size
GMPC132	Solder Ring 45° Elbow	15mm
GMPC133	Solder Ring 45° Elbow	22mm
GMPC134	Solder Ring 45° Elbow	28mm
GMPC135	Solder Ring 45° Elbow	35mm

Solder Ring Equal Tees



- Pre-soldered capillary connectors, used in condensate removal applications

Part No	Description	Size
GMPC142	Solder Ring Equal Tee	15mm
GMPC143	Solder Ring Equal Tee	22mm
GMPC144	Solder Ring Equal Tee	28mm
GMPC145	Solder Ring Equal Tee	35mm



Copper M Pressfit Jaws



- For copper pressfit system
- 15kN Jaws compatible with 15kN press tool
- 19kN Jaws compatible with the 19kN RLS & Rothenberger press tools
- M-Profile

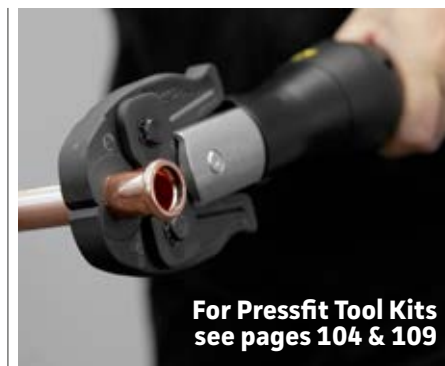
Part No	Description	Capacity	Size
GMCPJ16	Copper Pressfit Jaw	15kN	15mm
GMCPJ23	Copper Pressfit Jaw	15kN	22mm
GMCPJ29	Copper Pressfit Jaw	15kN	28mm
GMCPJ15	Copper Pressfit Jaw	19kN	15mm
GMCPJ22	Copper Pressfit Jaw	19kN	22mm
GMCPJ28	Copper Pressfit Jaw	19kN	28mm
GMCPJ35	Copper Pressfit Jaw	19kN	35mm

Copper Press Straight Couplers



- Conforms with BS EN 1057
- Fitted with EPDM seals (O-rings)
- WRAS Approved
- Max working pressure: 16 bar (PN16)
- Working temperature range: -10°C to 110°C
- Press profile: M

Part No	Description	Size	Qty/Pk
GMCP1	Copper Press Straight Coupler	15mm	pk 10
GMCP2	Copper Press Straight Coupler	22mm	pk 10
GMCP3	Copper Press Straight Coupler	28mm	pk 10
GMCP4	Copper Press Straight Coupler	35mm	pk 4



Copper Press 90° Bends



- Conforms with BS EN 1057
- Fitted with EPDM seals (O-rings)
- WRAS Approved
- Max working pressure: 16 bar (PN16)
- Working temperature range: -10°C to 110°C
- Press profile: M

Part No	Description	Size	Qty/Pk
GMCP11	Copper Press 90° Bend	15mm	pk 10
GMCP12	Copper Press 90° Bend	22mm	pk 10
GMCP13	Copper Press 90° Bend	28mm	pk 5
GMCP14	Copper Press 90° Bend	35mm	pk 2

Copper Press 45° Bends



- Conforms with BS EN 1057
- Fitted with EPDM seals (O-rings)
- WRAS Approved
- Max working pressure: 16 bar (PN16)
- Working temperature range: -10°C to 110°C
- Press profile: M

Part No	Description	Size	Qty/Pk
GMCP21	Copper Press 45° Bend	15mm	pk 10
GMCP22	Copper Press 45° Bend	22mm	pk 10
GMCP23	Copper Press 45° Bend	28mm	pk 5
GMCP24	Copper Press 45° Bend	35mm	pk 4

Copper Press Equal Tees

- Conforms with BS EN 1057
- Fitted with EPDM seals (O-rings)
- WRAS Approved
- Max working pressure: 16 bar (PN16)
- Working temperature range: -10°C to 110°C
- Press profile: M



Part No	Description	Size	Qty/Pk
GMCP31	Copper Press Equal Tees	15mm	pk 10
GMCP32	Copper Press Equal Tees	22mm	pk 10
GMCP34	Copper Press Equal Tees	28mm	pk 4
GMCP35	Copper Press Equal Tees	35mm	pk 2

Copper Press Female Threaded Tee

- For providing a ½" BSP female branch off 22mm plumbing copper
- Conforms with BS EN 1057
- Fitted with EPDM seals (O-rings)
- WRAS Approved
- Max working pressure: 16 bar (PN16)
- Working temperature range: -10°C to 110°C
- Press profile: M



Part No	Description	Size	Qty/Pk
GMCP62	Copper Press Fit Tee	22 x 22 x ½" FT	pk 10

Copper Press Reducing Tees

- Conforms with BS EN 1057
- Fitted with EPDM seals (O-rings)
- WRAS Approved
- Max working pressure: 16 bar (PN16)
- Working temperature range: -10°C to 110°C
- Press profile: M



Part No	Description	Size	Qty/Pk
GMCP33	Copper Press Reducing Tees	22 x 22 x 15mm	pk 10

Copper Press Fitting Reducers

- Conforms with BS EN 1057
- Fitted with EPDM seals (O-rings)
- WRAS Approved
- Max working pressure: 16 bar (PN16)
- Working temperature range: -10°C to 110°C
- Press profile: M



Part No	Description	Size	Qty/Pk
GMCP50	Copper Press Fitting Reducer	22 - 15mm	pk 10
GMCP49	Copper Press Fitting Reducer	28 - 22mm	pk 10
GMCP52	Copper Press Fitting Reducer	35 - 28mm	pk 4

Copper Press Ball Valves

- Supplied with a lever and copper press fit ends for a super fast leak free connection
- Conforms with BS EN 1057
- Fitted with EPDM seals (O-rings)
- WRAS Approved
- Max working pressure: 16 bar (PN16)
- Working temperature range: -10°C to 110°C
- Press profile: M



Part No	Description	Size
GMCP41	Copper Press Ball Valve	15mm
GMCP42	Copper Press Ball Valve	22mm
GMCP43	Copper Press Ball Valve	28mm
GMCP44	Copper Press Ball Valve	35mm

Copper Press Male Threaded Adapter

- For connecting 22mm plumbing copper tubing to ¾" BSP female threads
- Conforms with BS EN 1057
- Fitted with EPDM seals (O-rings)
- WRAS Approved
- Max working pressure: 16 bar (PN16)
- Working temperature range: -10°C to 110°C
- Press profile: M



Part No	Description	Size	Qty/Pk
GMCP51	Copper Press Male Thread Adapter	22mm x ¾"	pk10

Brass Compression Straight Couplers



- Used for joining plumbing copper tubing in condensate removal applications

Part No	Description	Size
GMPC40	Brass Compression Straight Coupler	15mm
GMPC41	Brass Compression Straight Coupler	22mm
GMPC42	Brass Compression Straight Coupler	28mm
GMPC43	Brass Compression Straight Coupler	35mm

Brass Compression 90° Elbows



- Used for joining plumbing copper tubing in condensate removal applications

Part No	Description	Size
GMPC44	Brass Compression 90° Elbow	15mm
GMPC45	Brass Compression 90° Elbow	22mm
GMPC46	Brass Compression 90° Elbow	28mm
GMPC47	Brass Compression 90° Elbow	35mm

Brass Compression Equal Tees



- Used for joining plumbing copper tubing in condensate removal applications

Part No	Description	Size
GMPC48	Brass Compression Equal Tee	15mm
GMPC49	Brass Compression Equal Tee	22mm
GMPC50	Brass Compression Equal Tee	28mm
GMPC51	Brass Compression Equal Tee	35mm

Brass Compression Reducers



- Used for joining plumbing copper tubing in condensate removal applications

Part No	Description	Size
GMPC56	Brass Compression Reducer	22mm - 15mm
GMPC57	Brass Compression Reducer	28mm - 22mm
GMPC59	Brass Compression Reducer	35mm - 28mm

Brass Compression Female Iron Couplers



- Used for joining plumbing copper tubing in condensate removal applications

Part No	Description	Size
GMPC214	Brass Compression Female Iron Coupler	22mm x ¼" FT

Brass Compression Male Iron Couplers



- Used for joining plumbing copper tubing in condensate removal applications

Part No	Description	Size
GMPC222	Brass Compression Male Iron Coupler	15mm x ¼" MT
GMPC225	Brass Compression Male Iron Coupler	22mm x ¼" MT
GMPC228	Brass Compression Male Iron Coupler	28mm x 1" MT

Brass Compression Female Iron Elbow



- For connecting 22mm plumbing copper tubing to 1" threads

Part No	Description	Size
GMPC237	Brass Compression Female Iron Elbow	22mm x 1" FT

Brass Compression End Caps



- Use for capping plumbing copper tubing in condensate removal applications.

Part No	Description	Size
GMPC52	Brass Compression End Caps	15mm
GMPC53	Brass Compression End Caps	22mm
GMPC54	Brass Compression End Caps	28mm
GMPC55	Brass Compression End Caps	35mm

Brass Compression Female Iron Tee



- For providing a ½" BSP female branch off 22mm plumbing copper

Part No	Description	Size
GMPC58	Female Iron Tee	22 x 22mm x ½"

Brass Hexagon Bushes



- Used to reduce BSP threaded fittings

Part No	Description	Size
GMPC253	Brass Hexagon Bush	½" M x ¼" F
GMPC254	Brass Hexagon Bush	¾" M x ½" F

¼ Turn Lever Ball Valve



- ¼ turn lever
- WRAS approved
- BS EN331
- Nickel plated
- c/w red & blue handles

Part No	Description	Size
GMPC300	¼ Turn Lever Ball Valve	15mm
GMPC302	¼ Turn Lever Ball Valve	22mm
GMPC494	¼ Turn Lever Ball Valve	28mm
GMPC496	¼ Turn Lever Ball Valve (Blue Handle Only)	35mm

Chrome Isolation Valves & Olives



- For use in compression fittings

- Light pattern
- Shut-off valve with compression ends

Part No	Description	Size
GMPC24	Chrome Isolation Valve	15mm
GMPC25	Chrome Isolation Valve	22mm
GMPC256	Brass Olive	15mm
GMPC257	Brass Olive	22mm

Brass Pipe Rings



Part No	Description	Size	Qty/Pk
GMJ14A	M10 Single Brass Pipe Ring	15mm	Each
GMJ15	M10 Single Brass Pipe Ring	22mm	Each
GMJ16	M10 Single Brass Pipe Ring	28mm	Each
GMJ17	M10 Single Brass Pipe Ring	35mm	Each
GMJ18	M10 Single Brass Pipe Ring	42mm	Each

- Used for pipe installation/management
- Can be used in conjunction with M10 male backplates
- Available to suit common pipe sizes, from 15mm up to 42mm

Male Brass Backplate



- Can be used in conjunction with brass pipe rings to secure copper pipework to walls and ceilings
- Available in M10

Part No	Description	Size	Qty/Pk
GMJ13A	Male Brass Backplate	M10	Each

Female Brass Backplate



- Can be used in conjunction with M10 studding

Part No	Description	Size	Qty/Pk
GMJ11A	Female Brass Backplate	M10	Each

Pressed Pipe Clips



- Used for pipe installation/management
- Available to suit common pipe sizes, from 15mm up to 28mm

Part No	Description	Size	Qty/Pk
GMPC30	Pressed Pipe Clip	15mm	Each
GMPC31	Pressed Pipe Clip	22mm	Each
GMPC32	Pressed Pipe Clip	28mm	Each



Rubber Lined Pipe Clamps



- All clips are dual tapped to take M8 and M10 studding
- Rubber lining ideal for both insulation and noise control
- *GMJ4 suits 1-1/4" drain

Part No	Description	Size	Qty/Pk
GMJ1-50	Rubber Lined Pipe Clamp	15mm	pk 50
GMJ2-50	Rubber Lined Pipe Clamp	22mm	pk 50
GMJ3-50	Rubber Lined Pipe Clamp	28mm	pk 50
GMJ4-50*	Rubber Lined Pipe Clamp	35mm	pk 50

Part No	Description	Size	Qty/Pk
GMJ5-50	Rubber Lined Pipe Clamp	42mm	pk 50
GMJ13B-50	Rubber Lined Pipe Clamp	48 - 53mm	pk 50
GMJ6-50	Rubber Lined Pipe Clamp	54mm	pk 50
GMJ14B	Rubber Lined Pipe Clamp	58 - 64mm	Each
GMJ11B	Rubber Lined Pipe Clamp	108mm	Each

Munson Base

STÖRNCH



- Used to attach studding to a flat surface
- Dual tapped to accept M8 or M10 threads
- Zinc plated (BZP)

Part No	Description	Qty/Pk
GMJ12A-25	Dual Tapped Munson Bases BZP	pk 25

Talon Pipe Clips



- Offering a secure, 360° fixing for pipework
- High quality polypropylene hinged clip

Part No	Description	Size	Qty/Pk
GMTAL15S	Talon Pipe Clips	15mm	pk 100
GMTAL22S	Talon Pipe Clips	22mm	pk 100
GMTAL28S	Talon Pipe Clips	28mm	pk 50

STÖRNCH High Flow Tank Pump

STÖRNCH

- The STÖRNCH high flow tank pump is designed to collect condensate & discharge it up to recommended maximum 5 metres head
- Plug & Play

Key Features

- 4 inlets
- Wall mounts
- Quick release reservoir
- Retaining clip for outlet barb
- Plug & Play



Part No	Description	Model	Tank Size	Max Head	Max Flow	Hose Connection	dBa
GMP95	STÖRNCH Tank Pump	High Flow	1.7ltr	5mt	300ltr/hour	¼" & ⅜"	49 dBa



Aspen Max Hi-Flow Tank Pump



- The Max Hi-Flow tank pump carries on the Aspen Pumps tradition of build quality & high performance

Key Features

- 4 inlets
- Built-in spirit level
- Wall mounts
- Rod mounts
- Quick release reservoir
- Retaining clip for outlet barb
- Plug & Play



Part No	Description	Model	Tank Size	Max Head	Max Flow	Hose Connection	dBa
GMP20	Aspen Tank Pump	Max Hi-Flow	1.7ltr	5mt	550ltr/hour	¼" & ⅜"	44 dBa

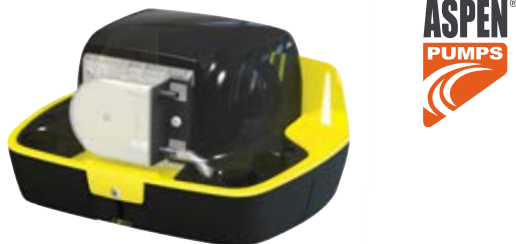
Aspen Mini Tank Pump



- The 'Mini' tank pump can be wall mounted, floor mounted, in-pan or suspended on M8/ M10 threaded rod
- Using piston technology, this is a compact, powerful and multi-functional tank pump

Part No	Description	Model	Tank Size	Max Head	Max Flow	Hose Connection	dBa
GMP49	Aspen Tank Pump	Mini Tank	0.24ltr	15mt	35ltr/hour	¼" & ⅜"	35 dBa

Aspen Hi-Lift Tank Pump



- The world's only peristaltic tank pump
- Offers high head and reliability
- Built-in spirit level
- Easy access to clean the tray
- Easy fit & maintenance

Part No	Description	Model	Tank Size	Max Head	Max Flow	Hose Connection	dBa
GMP8	Aspen Peristaltic Tank Pump	Hi-Lift	1ltr	12mt	11ltr/hour	¼"	51 dBa
GMP9	Aspen Peristaltic Tank Pump	Hi-Lift	2ltr	12mt	11ltr/hour	¼"	51 dBa

Sauermann Tank Pump Si83



- Float design resistant to fouling
- Tolerates acidic condensates (pH>2.5) produced by gas-condensing boilers
- No need to remove pump from installation to clean
- Removable anti-return valve
- Quick & easy maintenance
- Maintenance function in the Smartphone App (available for both iOS and Android devices)
- Floor mounting, wall mounting and suspension ceiling options
- 5 inlets - 4 on top, 1 on the side for low condensate entry

Part No	Description	Model	Tank Size	Max Head	Max Flow	Hose Connection	dBa
GMP65	Sauermann Tank Pump	Si83	2.0ltr	5.4mt	700ltr/hour	¾"	45 dBa

Aspen Heavy Duty Tank Pump



- With an impressive flow rate, this robust and reliable 'Heavy Duty' pump is perfect for the rapid removal of large quantities of condensate water

Part No	Description	Model	Tank Size	Max Head	Max Flow	Hose Connection	dBa
GMP10	Aspen Tank Pump	Heavy Duty	4ltr	6mt	900ltr/hour	¾"	60 dBa
GMP11	Aspen Tank Pump	Heavy Duty	4ltr	9mt	1070ltr/hour	¾"	64 dBa

Aspen Hot Water Tank Pump



- Built of heat resistant cycloxy, this pump is designed to handle high water temperatures of 100°C water
- Outstanding water flow rates

Part No	Description	Model	Tank Size	Max Head	Max Flow	Hose Connection	dBa
GMP12	Aspen Tank Pump	Hot Water	4ltr	7mt	900ltr/hour	¾"	60 dBa

Little Giant Tank Pump - 1.9 Ltr



- Ideal for cassettes and ducted units
- Easy to install and low maintenance
- High durability and reliability
- Supplied with both ¾" & ½" check valve outlets

Part No	Description	Model	Tank Size	Max Head	Max Flow	Hose Connection	dBa
GMP30	Little Giant Tank Pump	VCMA20S	1.9ltr	4.3mt	300ltr/hour	¼" & ⅜"	58 dBa

Aspen Peristaltic Standard Sensor

- Operated by an air conditioning cooling signal, the 'Standard' peristaltic sets the standard for reliability
- Can run dry
- Can pump contaminated water
- c/w 2mt plug & play lead



Part No	Description	Model	Max Head	Max Lift	Max Flow	Hose Connection	dBa
GMP1	Aspen Peristaltic Pump	Standard Sensor	12mt	3mt	6.5ltr/hour	¼"	47 dBa

Aspen Universal Peristaltic Temperature Sensor

- The top selling 'Universal' is operated by two air temperature sensors. The peristaltic rotary movement creates a continuous pressure meaning the pump can be sited 3mt away from the source with no effect in performance
- Can run dry
- Can pump contaminated water
- c/w 3mt plug & play lead/sensor



Part No	Description	Model	Max Head	Max Lift	Max Flow	Hose Connection	dBa
GMP2	Aspen Peristaltic Pump	Universal T° Sensor	12mt	3mt	6.5tr/hour	¼"	47 dBa

Aspen MK4 Peristaltic Water Sensor

- The 'MK4' peristaltic is operated using two water sensors. The lower sensor comes into contact with water, the heat conductivity from that sensor provides a temperature difference between the second - energising the pump
- Can run dry
- Can pump contaminated water
- c/w 2mt plug & play lead



Part No	Description	Model	Max Head	Max Lift	Max Flow	Hose Connection	dBa
GMP3	Aspen Peristaltic Pump	MK4 Water Sensor	12mt	3mt	6.5ltr/hour	¼"	47 dBa

Aspen Peristaltic Mechanical Float

- Bringing mini pump and peristaltic pump technology together. Simply position the remote reservoir (float switch) in the condensate tray or fix to the drain pipe connection (depending on the chosen reservoir)
- c/w submersible secondary reservoir
- c/w 2mt plug & play lead



Part No	Description	Model	Max Head	Max Lift	Max Flow	Hose Connection	dBa
GMP4	Aspen Peristaltic Pump	Mechanical Float	12mt	3mt	6.5ltr/hour	¼"	47 dBa

Aspen Mini Lime Elbow Pump c/w Trunking



- c/w anti-vibration damper and built in sound absorbing materials
- Quick release reservoir
- 70mm Speediduct trunking

- LED operation feedback
- Perfect for offices and meeting rooms
- Can install left or right hand

Part No	Description	Model	Trunking	Max Head	Max Flow	Hose Connection	dBa
GMP21S	Aspen Elbow Pump	Mini Lime Silent+	Speediduct - Ivory	10mt	12ltr/hour	¼"	20 dBa
GMP21W	Aspen Elbow Pump	Mini Lime Silent+	Speediduct - White	10mt	12ltr/hour	¼"	20 dBa

Aspen Maxi Lime Elbow Pump c/w Ivory Trunking



- Designed for larger units and humid environments
- The Maxi Lime elbow pump gives you superb power when needed
- Can install left or right hand
- 70mm Speediduct trunking

Part No	Description	Model	Trunking	Max Head	Max Flow	Hose Connection	dBa
GMP24	Aspen Elbow Pump	Maxi Lime	Speediduct - Ivory	15mt	35ltr/hour	¼"	35 dBa

Sauermann Delta Pack Elbow Pump c/w Trunking



- Complete kit intended for wall mounted air conditioning units
- Quiet in operation
- Sauermann 80x60mm white
- Easily opened by hand
- Includes the latest piston pump technology

Part No	Description	Model	Trunking	Max Head	Max Flow	Hose Connection	dBa
GMP75	Sauermann Elbow Pump	Delta Pack	Sauermann	14mt	20ltr/hour	¼"	22 dBa

Whispa-Q-Trunk Pump

The WHISPA-Q-TRUNK is an industry first stand-alone pump in trunking for the future. Designed to provide ultra-quiet running utilising the new DC DIAPHRAGM PUMP TECHNOLOGY along with a stylish sleek ultra-cool design. This new pump offers easy installation and hassle free maintenance, whilst dramatically cutting running costs. A true silent, gentle giant that doesn't cost the earth.

- Features:
- Innovative design
- Ultra quiet
- Low power consumption
- Added space for pipe and hose
- Alarm warning red LED



Part No	Description	Model	Trunking	Max Head	Max Flow	Hose Connection	dBa
GMP68	Elbow Pump	Whispa-Q-Trunk	Whispa-Q Trunking	8mt	33ltr/hour	¼"	21 dBa

Blue Diamond MicroBlue Pump c/w Trunking

BLUEDIAMOND
CONDENSATE REMOVAL PUMPS

- The MicroBlue™ is the only ductless pump on the market that can remove sediment/ debris with no need of filters or regular servicing intervals
- Smooth flow rate from the MicroBlue™ eliminates the necessity for any pulsating free tubing and silencing devices
- Can be mounted in any orientation up to 5m away from the air conditioning unit operating both wet and dry continuously
- Silent operation
- 70mm Speediduct trunking



Part No	Description	Model	Trunking	Max Head	Max Lift	Max Flow	Hose Connection	dBa
GMP90	Blue Diamond Pump	Micro Blue	SpeediDuct -White	5mt	2mt	5ltr/hour	¼"	17 dBa
GMP94	Blue Diamond Pump	Micro Blue	SpeediDuct -Ivory	5mt	2mt	5ltr/hour	¼"	17 dBa

Aspen Mini Lime Elbow Pump

- Pump only version of the Silent+ Mini Lime
- c/w anti-vibration damper and built in sound absorbing materials
- Quick release reservoir
- LED operation feedback
- Can install left or right hand



Part No	Description	Model	Trunking	Max Head	Max Flow	Hose Connection	dBa
GMP225	Aspen Elbow Pump	Mini Lime Silent+	Without Trunking	10mt	12ltr/hour	¼"	20 dBa

Aspen Maxi Lime Elbow Pump

- Designed for larger units and humid environments
- Gives you superior power when you need it
- Pump only version of the Maxi Lime
- Can install left or right hand



Part No	Description	Model	Trunking	Max Head	Max Flow	Hose Connection	dBa
GMP50	Aspen Elbow Pump	Maxi Lime	Without Trunking	15mt	35ltr/hour	¼"	35 dBa

Sauermann Si10 Universal Mini Elbow Pump

- Replacement for Delta pumps
- Improved design to ensure a reduced sound level and ease of maintenance
- The distinctive shape of the Si-10 pump allows its use in both new installations and refurbishments



Part No	Description	Model	Trunking	Max Head	Max Flow	Hose Connection	dBa
GMP71	Sauermann Mini Elbow Pump	Si10	Without Trunking	14mt	20ltr/hour	¼"	22 dBa

Aspen Micro-V i4 Intelligent Pump



- The Micro-V pump which has no breather tube, fits into the smallest of spaces. On-demand operation and floatless technology delivers silent running and a longer pump life
- No breather tube
- Unrivalled controlled soft start function for truly quiet running and prolonged pump life
- Small multi orientation sensor with visual pump status diagnostics
- Perfect for installing directly inside the unit

Part No	Description	Model	Max Head	Max Lift	Max Flow	Hose Connection	dBa
GMP60	Aspen Mini Pump	Micro-V i4 (Intelligent)	10mt	2mt	14.5ltr/hour	¼"	19 dBa

Blue Diamond Micro Blue Pump c/w Reservoir Sensor



- The BLUEDIAMOND® MICROBLUE® utilises the ground-breaking patented GYROK™ technology.
- The pump is totally self-priming, and offers 5ltr/hour flow even in high lift and high head applications
- The MICROBLUE® is dual voltage
- Thanks to the silent nature of the pump, running wet or dry, combined with unmatched thermistor level sensing technology, eliminates the risk of stuck float switches.

Part No	Description	Model	Max Head	Max Lift	Max Flow	Hose Connection	dBa
GMP42	Blue Diamond Pump	Micro Blue	5mt	2mt	5ltr/hour	¼"	17 dBa

Aspen Mini Blanc Pump



- The 'ultra quick fit' Mini Blanc is designed to be fitted beneath high wall indoor units and offers easy access for future maintenance

Part No	Description	Model	Max Head	Tank Size	Max Flow	Hose Connection	dBa
GMP26	Aspen Mini Pump	Mini Blanc	10mt	0.24ltr	12ltr/hour	¼"	21 dBa

Pumpkin 10 Mini Pump

- Float operated pump complete with slim design and low noise level
- Suitable for 80mm trunking
- For air conditioning systems up to 10kW
- Fits perfectly in either wall mounted mini split or ceiling mounted air conditioners
- The small transparent float sensor can easily be connected to the drain hose using the attached inlet hose



Part No	Description	Max Head	Max Lift	Max Flow	Hose Connection
GMP53	Pumpkin 10 Mini Pump	10mt	1.5mt	9ltr/hour	¼"

Galaxy Electronic Smart Pump

- Compact electronic sensor can be mounted in most positions making it the most versatile sensor on the market
- With a quiet soft start and switch-off, the intelligent electronic control delivers quiet and unobtrusive pump operation
- All electronics are fully encapsulated for ultra-reliability and a comprehensive fitting kit is supplied
- Slimline designed to be installed within the wall mount or in plastic trunking
- Electronic sensing reservoir therefore no float



Part No	Description	Max Head	Max Lift	Max Flow	Hose Connection	dBa
GMP48	Galaxy Electronic Smart Pump	5mt	1.5mt	12ltr/hour	¼"	21 dBa

Aspen Mini Aqua Pump & Aspen Mini Aqua Silent+ Pump



GMP25

GMP25S

- The world's slimmest condensate removal pump is designed to fit where others can't
- Combining Silent+ technology and the slimmest mini pump on the market. Silent+ Mini Aqua leads the way in innovation

Part No	Description	Model	Max Head	Max Lift	Max Flow	Hose Connection	dBa
GMP25	Aspen Mini Pump	Mini Aqua	10mt	2mt	12ltr/hour	¼"	21 dBa
GMP25S	Aspen Mini Pump	Mini Aqua Silent+	10mt	2mt	12ltr/hour	¼"	19 dBa

Aspen Mini Tank Pump

- The 'Mini' tank pump can be wall mounted, floor mounted, in-pan or suspended on M8/ M10 threaded rod
- Using piston technology this is a compact, powerful and multi-functional tank pump



Part No	Description	Model	Tank Size	Max Head	Max Flow	Hose Connection	dBa
GMP49	Aspen Tank Pump	Mini Tank	0.24ltr	15mt	35ltr/hour	¼" & ⅜"	35 dBa

Aspen Mini Orange Pump



- Small & powerful, quiet & reliable pump
- Submersible secondary reservoir included
- Plug & play
- Anti-siphon device

Part No	Description	Model	Max Head	Max Lift	Max Flow	Hose Connection	dBa
GMP14	Aspen Mini Pump	Mini Orange	10mt	2mt	12ltr/hour	¼"	21 dBa

Aspen Mini Orange Silent+ Pump



- Small & powerful, quiet & reliable pump
- Submersible secondary reservoir included
- Plug & play
- Anti-siphon device
- The quietest in its class, featuring an acoustic damper, anti-vibration tubing and bracket
- A Silent+ Mini Orange is whisper quiet

Part No	Description	Model	Max Head	Max Lift	Max Flow	Hose Connection	dBa
GMP14S	Aspen Mini Pump	Mini Orange Silent+	10mt	2mt	12ltr/hour	¼"	19 dBa

Aspen Maxi Orange Pump



- Perfect for large commercial units
- Superior performance with high power motor
- Submersible secondary reservoir included
- Designed for larger units, the Maxi Orange pump gives you the extra power when you need it

Part No	Description	Model	Max Head	Max Lift	Max Flow	Hose Connection	dBa
GMP23	Aspen Maxi Pump	Maxi Orange	15mt	2mt	35ltr/hour	¼"	35 dBa

Blue Diamond MicroBlue Pump c/w Trunking

BLUEDIAMOND
CONDENSATE REMOVAL PUMPS

- The MicroBlue™ is the only ductless pump on the market that can remove sediment/ debris with no need of filters or regular servicing intervals
- Smooth flow rate from the MicroBlue™ eliminates the necessity for any pulsating free tubing and silencing devices
- Can be mounted in any orientation up to 5m away from the air conditioning unit operating both wet and dry continuously
- Silent operation
- 70mm Speediduct trunking



Part No	Description	Model	Trunking	Max Head	Max Lift	Max Flow	Hose Connection	dBa
GMP90	Blue Diamond Pump	Micro Blue	SpeediDuct - White	5mt	2mt	5ltr/hour	¼"	17 dBa
GMP94	Blue Diamond Pump	Micro Blue	SpeediDuct - Ivory	5mt	2mt	5ltr/hour	¼"	17 dBa

Blue Diamond Mini Blue Diaphragm Pump - Temperature Sensor

BLUEDIAMOND
CONDENSATE REMOVAL PUMPS

- Mini Blue condensate removal pump provides installers complete flexibility when it comes to positioning the pump
- Whisper quiet
- No maintenance required
- Positive displacement pump eliminates need for check valve or siphon
- Tolerates suspended solids
- Capable of running dry without an overheating failure
- 2mt temperature sensor



Part No	Description	Model	Max Head	Max Lift	Max Flow	Hose Connection	dBa
GMP43	Blue Diamond Pump	Mini Blue T° Sensor	8mt	5mt	8ltr/hour	¼"	21 dBa

Blue Diamond Maxi Blue Diaphragm Pump - Temperature Sensor

BLUEDIAMOND
CONDENSATE REMOVAL PUMPS

- The Maxi Blue is a small yet powerful pump, using the same patented sensing technology as the rest of the range.
- Designed for high humidity environments, the Maxi Blue only senses when water is present, offering an energy efficient drainage solution for condensate removal
- The pump can be mounted in any orientation and is exceptionally quiet with no vibration, making it ideal for installations where low noise levels are key



Part No	Description	Model	Max Head	Max Lift	Max Flow	Hose Connection	dBa
GMP91	Blue Diamond Pump	Maxi Blue T° Sensor	8mt	8mt	14ltr/hour	¼"	21 dBa

Blue Diamond Maxi Blue Diaphragm Pump - Drainstik Sensor

BLUEDIAMOND
CONDENSATE REMOVAL PUMPS



- The BlueDiamond patented Drainstik is a slim line probe, which houses the water sensors and high level alarm
- Can be directly mounted into the drain tube

Part No	Description	Model	Max Head	Max Lift	Max Flow	Hose Connection	dBa
GMP93	Blue Diamond Pump	Maxi Blue Drainstik	8mt	8mt	14ltr/hour	¼"	21 dBa

Blue Diamond Maxi Blue Diaphragm Pump - Reservoir Sensor

BLUEDIAMOND
CONDENSATE REMOVAL PUMPS



- With no moving parts the Maxi Blue reservoir sensor offers a reliable alternative to stuck or sunken float switches

Part No	Description	Model	Max Head	Max Lift	Max Flow	Hose Connection	dBa
GMP92	Blue Diamond Pump	Maxi Blue Reservoir	8mt	8mt	14ltr/hour	¼"	21 dBa

Blue Diamond Mega Blue Diaphragm Pump - Reservoir Sensor

BLUEDIAMOND
CONDENSATE REMOVAL PUMPS



- Whilst being exceptionally quiet, it is also able to pump up to six storeys high, making the Mega Blue ideal for installations where distance is required

Part No	Description	Model	Max Head	Max Lift	Max Flow	Hose Connection	dBa
GMP41	Blue Diamond Pump	Mega Blue Reservoir	20mt	7mt	50ltr/hour	¼"	23 dBa

Aspen Refrigeration Cabinet Pump - 11 Ltr

ASPEN
PUMPS



Top Inlet

- Made of robust plastic, the lightweight ERRP (Economic Retail Refrigeration Pump) effectively pumps away defrost water and filters debris

Part No	Description	Model	Tank Size	Max Head	Max Flow	High Level Switch	Size	dBa
GMP38	Aspen Cabinet Pump	ERRP	11ltr	35mt	225ltr/hour	Yes	590 x 405 x 100mm	60 dBa

Aspen Refrigeration Cabinet Pump - 3.5 Ltr

ASPEN
PUMPS



Top Inlet



- Designed exclusively to fit underneath retail refrigeration cabinets the lightweight plastic ERRP (Economic Retail Refrigeration Pump) allows for the removal of defrost and contaminated water

Part No	Description	Model	Tank Size	Max Head	Max Flow	High Level Switch	Size	dBa
GMP98	Cabinet Pump	Low Profile ERRP	3.5ltr	21mt	190ltr/hour	Yes	530 x 240 x 75mm	60 dBa

Hydron Dairy Pump - 5Ltr

HYDRON



- The HY/DP30-S is a low profile, yet powerful, piston pump designed for use with dairy case installations
- Its ultra low height also means that it can be used for dairy cases where height is a restriction
- It has been designed for when low gravity drain is not available.
- Made in Britain

Part No	Description	Model	Tank Size	Max Head	Max Flow	Inlet	Size	Voltage
GMP36	Dairy Pump	Low Profile	5ltr	30mt	110ltr/hour	Top & Side	465 x 205 x 63mm	230V

Aspen Replacement Pump Tubes


GMP19

- Replacement pump head tube for use when servicing a peristaltic pump
- Suitable for all peristaltic pumps in the Aspen range


GMP80

- 14mm (ID) 19mm (OD) x 1mtr



Part No	Description	Size	Length
GMP19	Peristaltic Tube		
GMP80	Flexible Rubber Tube	14mm ID/19mm OD	1mt

Aspen 1.0Amp Fuse & Holder



- Protects Aspen condensate pumps from power overload

Part No	Description	Qty/Pk
GMP28	Aspen 1.0 Amp Fuse & Holder	pk 2

Unit To Pipe Connectors / Rubber Unit Adapters & Tank Pump Connectors



GMP85



GMP86



GMP87



GMP110



GMP111



GMP112

- Rubber adaptors to connect a condensate drain pipe to a cassette unit

- Rubber adapters to connect a condensate drain pipe to a tank pump

Part No	Description	Suitable For	Size	Qty/Pk
GMP85	Green Rubber Adapters		¾" - 1"	pk 3
GMP86	Blue Rubber Adapters		¾" - 1¼"	pk 3
GMP87	Black Rubber Adapters		¾" - 1¼"	pk 3
GMP110	Rubber Tank Pump Connectors	LG Units	16mm - 21mm	pk 3
GMP111	Rubber Tank Pump Connectors	Daikin & Panasonic Units	26mm - 21mm	pk 3
GMP112	Rubber Tank Pump Connectors	Daikin, Panasonic, Mitsubishi Electric & Mitsubishi Heavy Units	32mm - 21mm	pk 3

Consolve Drain Adapter



- Features a flexible rubber end to clamp to the drain outlet of the AC unit and a solvent weld connection for the drain pipe
- Automotive grade rubber
- Hydrodynamically designed for an unrestricted flow of condensate



Part No	Description	Size	Qty/Pk
GMCS1	Consolve Drain Adapter	1" - ¾"	Each
GMCS2	Consolve Drain Adapter	1¼" - ¾"	Each